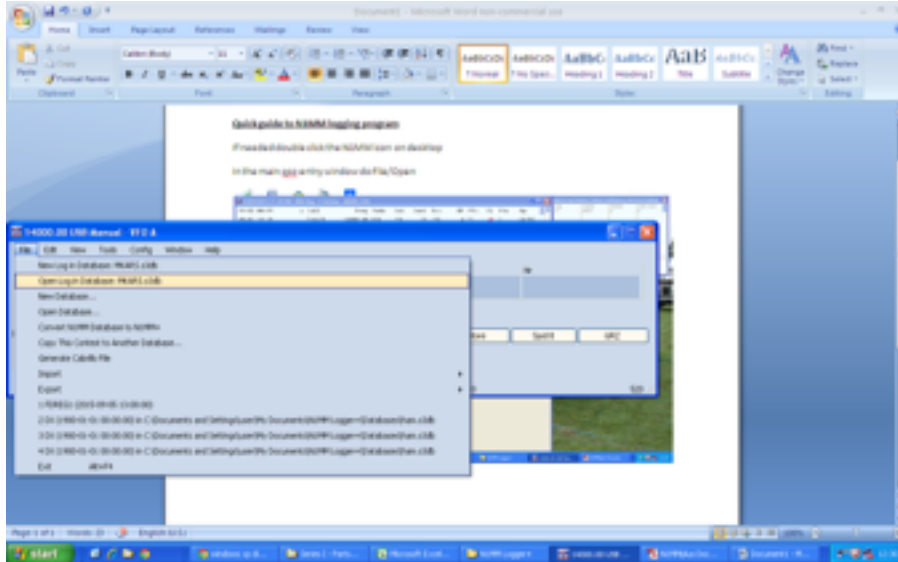


Quick guide to N1MM logging program

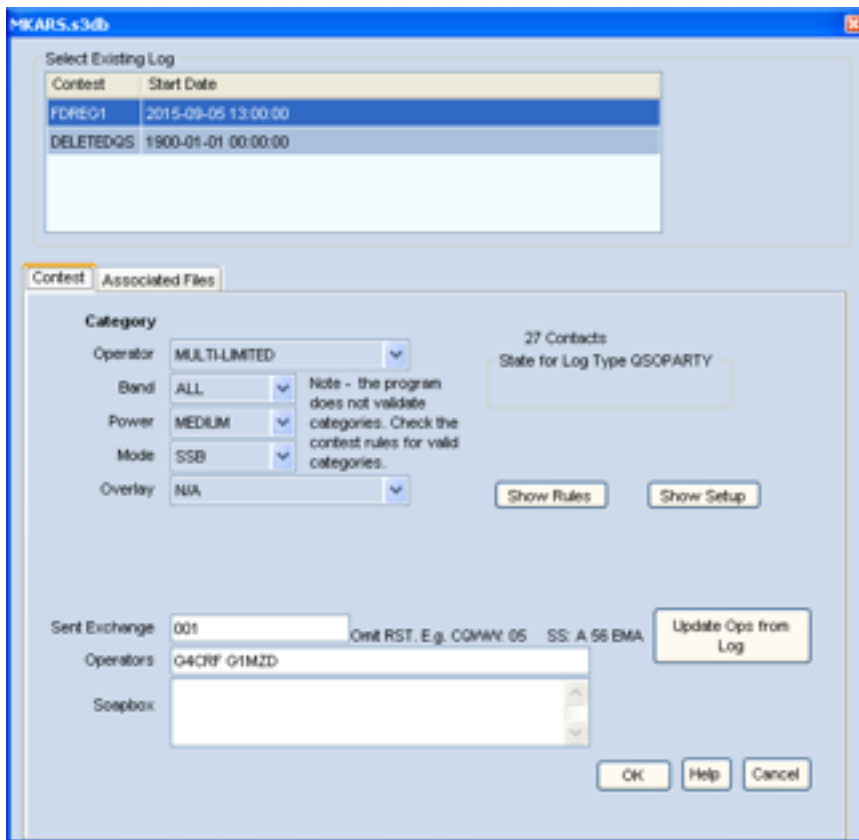
Intro

If program not running - double click the **N1MM Logger +** icon on desktop

In the main qso entry window do File/Open Log in Database

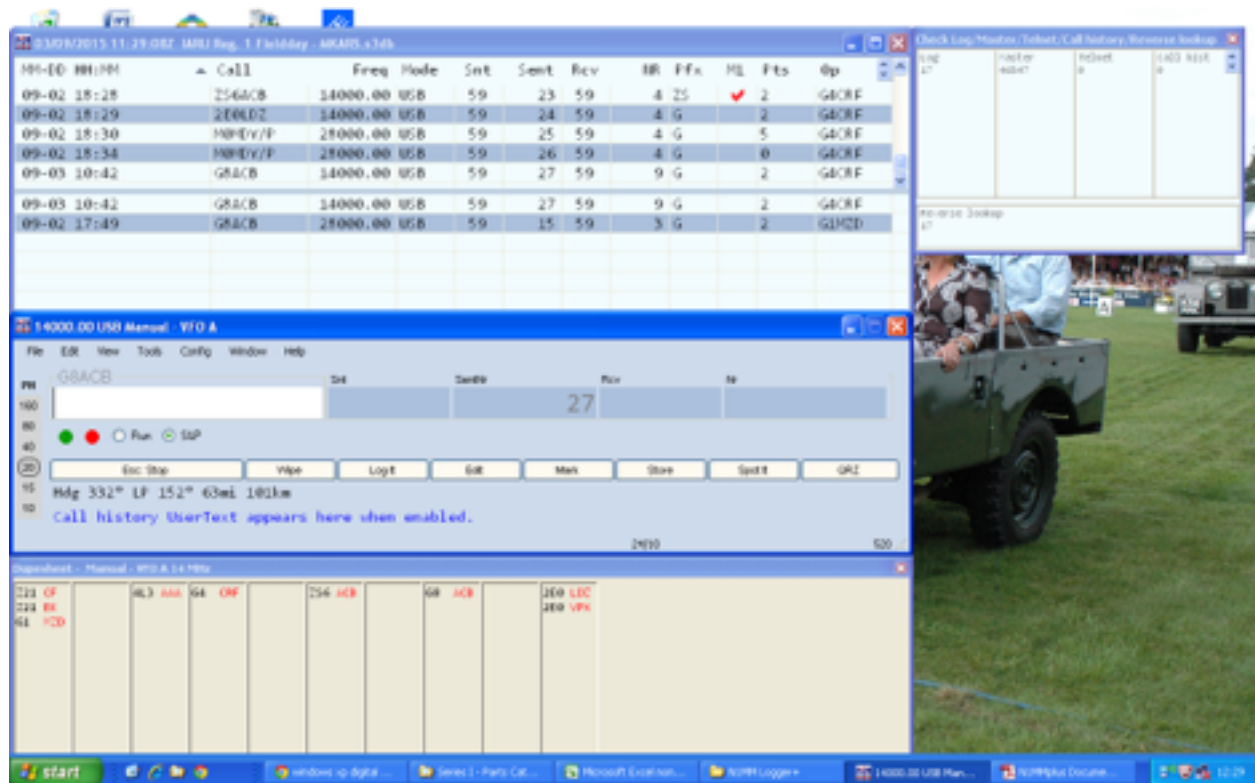


Select FDREG1 (Field Day Region 1) and click OK



If only the qso entry window is now open, do Window and click on LOG and then do Window and click Check and then Window and Visible Dupesheet to display the other required windows

Should then see:



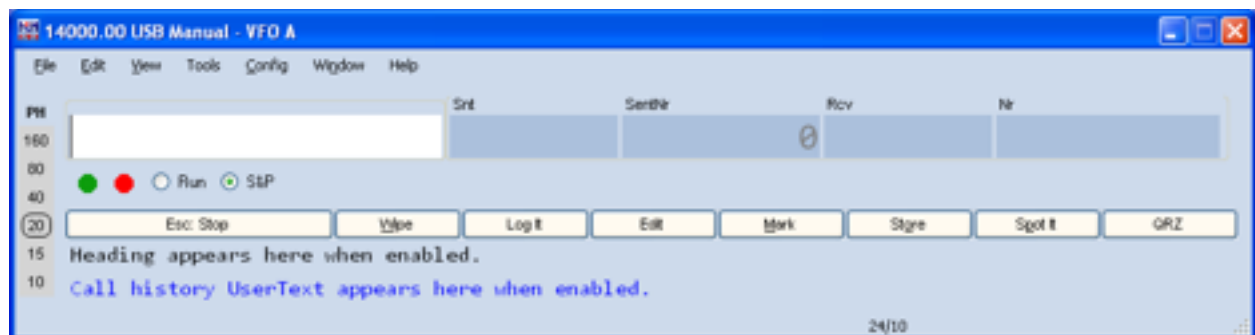
The top window top half is the log with newest qso at the bottom, the lower half displays contacts made with the current entered call, shows all callsigns and qsos on all bands once the first entered 3 characters have been entered in the qso window, so can easily check if an entered call has been worked before

Middle window is the qso entry

Bottom window is a check log, arranged using the main number in callsign, then in alpha order

Top right looks up the callsign to see if it's been in previous contests, and qrz.com if connected to internet etc, it is an attempt to validate entered calls, not sure how useful this is/will be for NFD

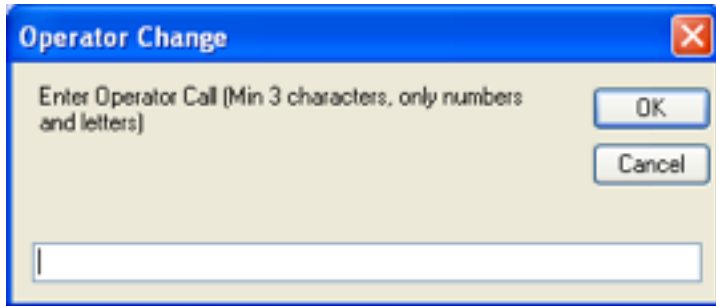
Main QSO entry



BEFORE logging any QSOs:

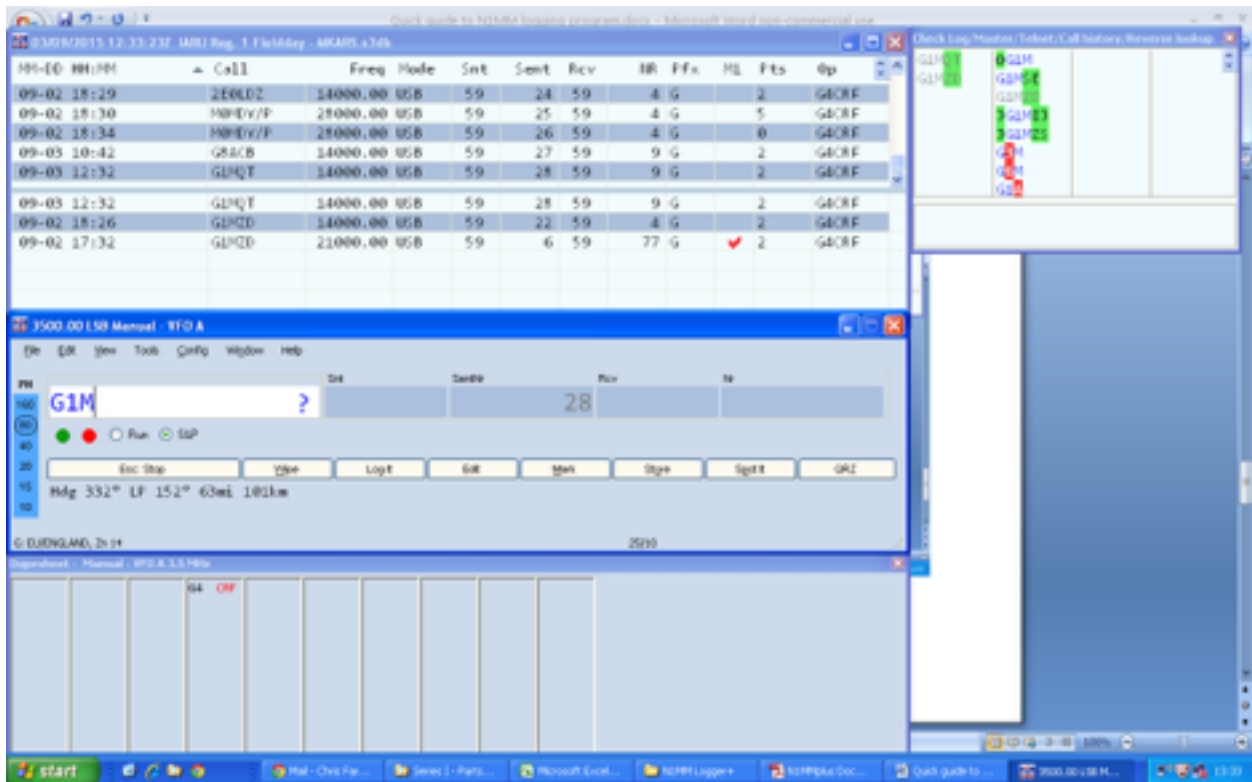
MUST select band to work on, click on the band from the list on left, ALSO MUST do this every time the band is changed, current band shows on top blue line of window and the band is circled on band list (do not worry about which VFO is being used in the log)

MUST record operator, ALSO MUST do this every time operator changes, Do CNTL O (or type OPON in call sign box & press RETURN) then enter call sign in window and click OK



Logging QSOs

Enter the call sign, as you start to type, after 3 characters the lower half of the log window displays any QSOs that match and as more of the call sign is entered the list reduces



If you only have part of a call and want to check if it's been worked or anything like it, can use wild cards

? Is any character so could search for G?FMC if the number not heard

* Is any number of characters, so if only heard FMC type in *FMC

Can use multiples so ?8* would look for any calls with 8 as second character

Probably easiest to just use * all the time so *8*

Also the colour of the call sign varies and so does the band list down left hand side

Callsign Colours:

Green callsign – needed on all bands, is a double multiplier (not sure we will see this for HF NFD)

Red callsign – needed on all bands , is also a multiplier (ie new country/prefix)

Blue callsign – country or call sign worked on at least 1 band (so no multiplier) but needed on this band (see band list)

Grey callsign - worked this call sign on at least this band WILL also say **DUPE** (see band list)

Band list colours:

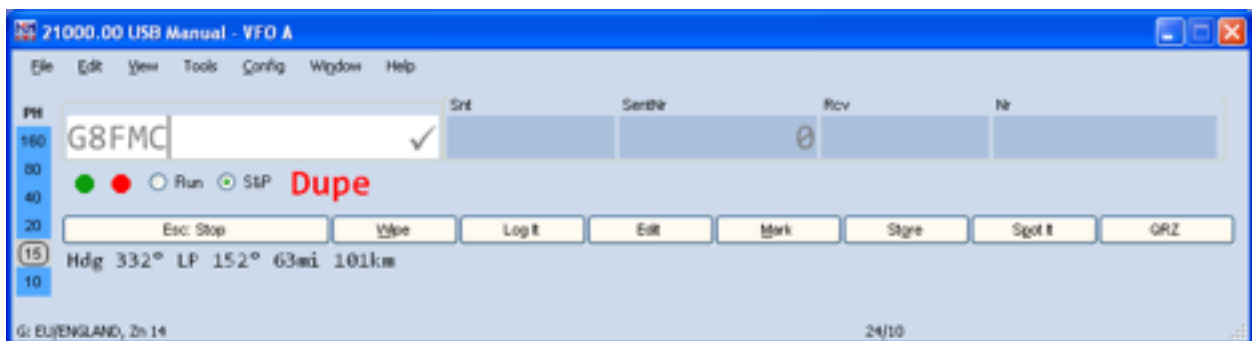
Green – country and/or callsign needed on all bands, is a double multiplier (not sure we will see this for HF NFD)

Red – country and/or callsign needed on all bands , is also a multiplier (ie new country/prefix)

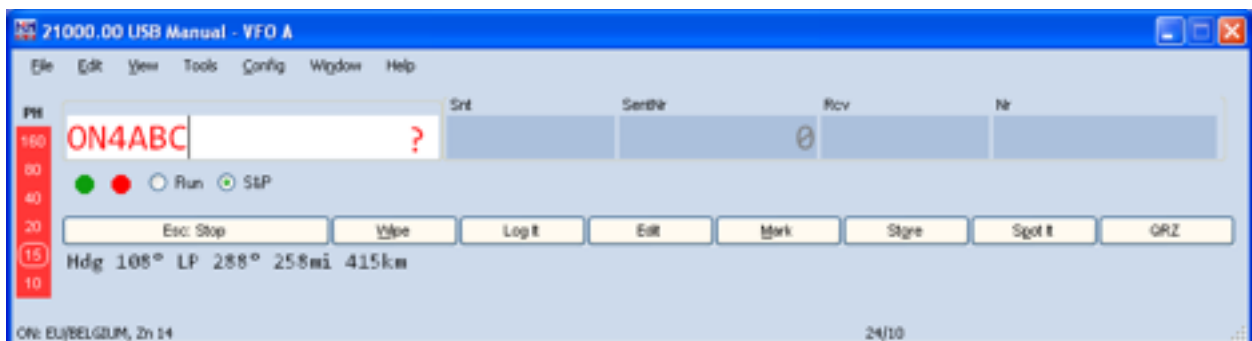
Blue – already have the country multiplier, ie worked on at least 1 other band, country and/or call sign needed on all blue coloured bands

Grey – already have the country multiplier, already worked this station on at least this band, needed on other blue coloured bands

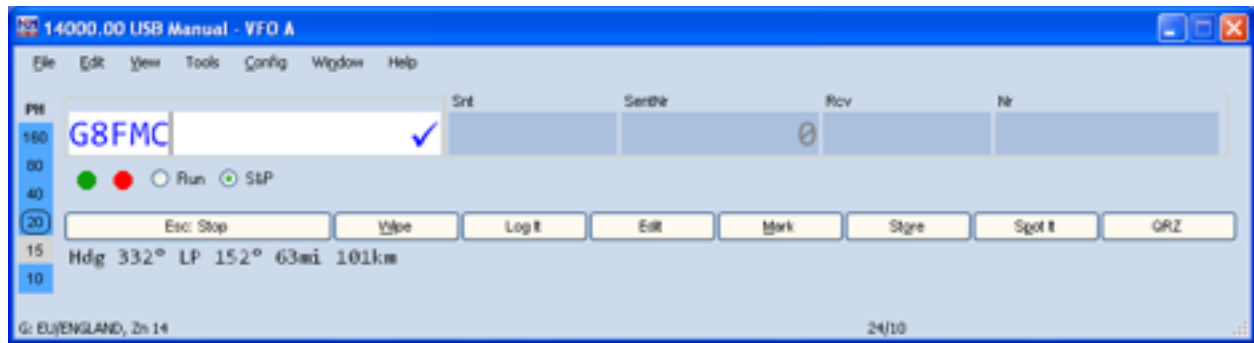
Duplicate examples, currently on 21MHz 15m and showing already worked G8FMC on this band, but needed on all other bands



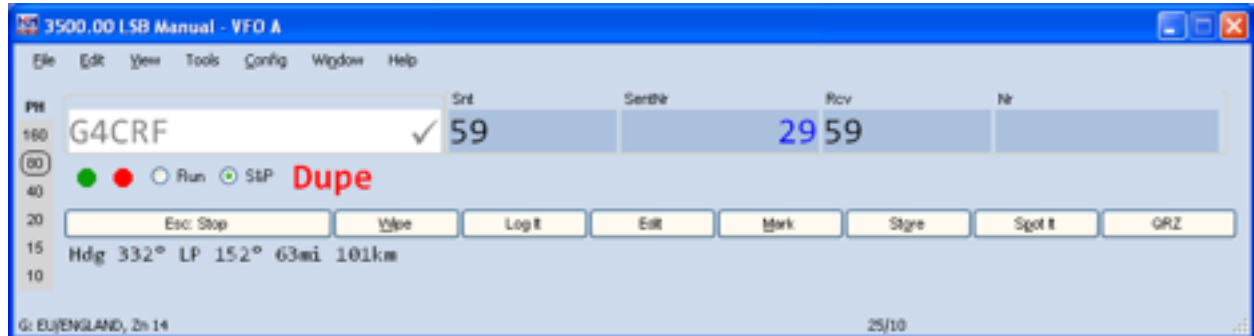
Need this station on all bands and is a multiplier, so worth working



G8FMC already worked on 15m band, but is needed on this band and all others



G4CRF worked on all bands so is a duplicate



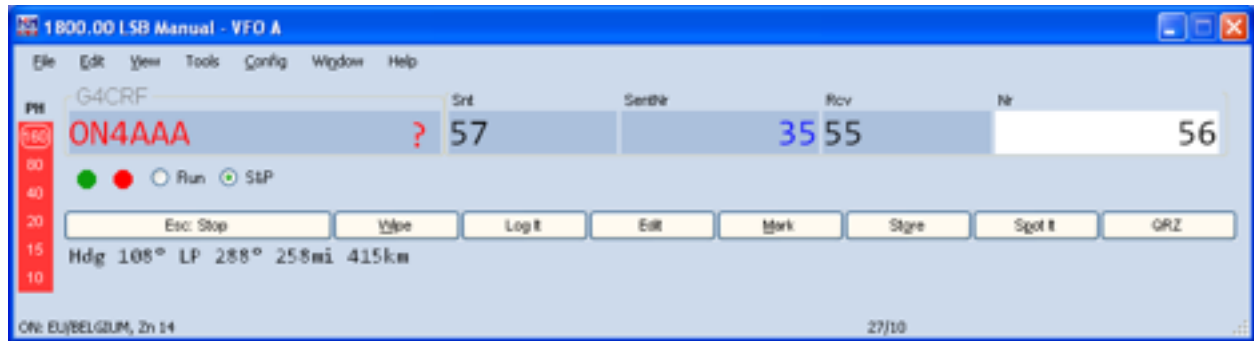
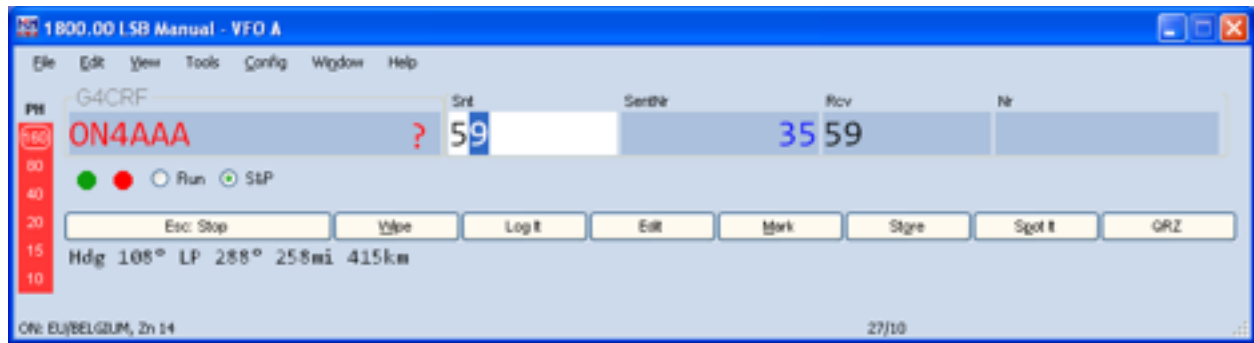
Once call sign is entered and the call sign is not grey and DUPE then

Either:

If 59 both ways just press space bar, our serial number is already displayed, just enter the other station's serial number and press RETURN to log the call, it really is that quick



Or if need to edit signal reports, use TAB key and enter signal strength etc (the 9 will be highlighted so just type 7 etc) and TAB to next field etc



Once RETURN is pressed call is logged, it will clear the qso entry window, put the qso in the log window top half and add to the log window bottom half to show what bands you have now worked this on for reference

IF the call won't log ie the qso entry window stays filled in, there is an issue with the entered qso, most likely serial number missing, invalid call sign, fat finger trouble on RS reports etc, look at the bottom of the qso entry window for the reason why



NOTE: the program WILL allow a duplicate to be logged despite the **DUPE** warning with NO warning other than the **DUPE** displayed after first typing in the call sign, but it will be recorded as a **DUPE** and have no score

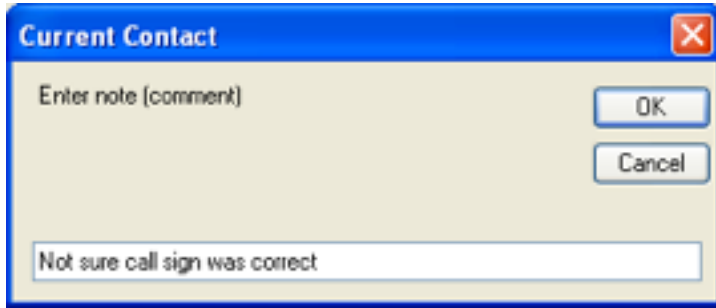
NOTE: It also seems that the RS field will accept stupid entries so be warned! The serial number is restricted to a number.

Abandoned QSOs and other problems

If having entered the entered call sign and program has done the checking etc, the contact does not complete just click on the Wipe button to clear the qso entry window, if half completed it and intend to go back, it can be completed and a note added to the contact for future reference.

If you want to FORCE a log entry that just will not behave, enter a note as below and use CNTL ALT RETURN, this qso will have to be reviewed before submitting the log

To add notes to a qso use CNTL N

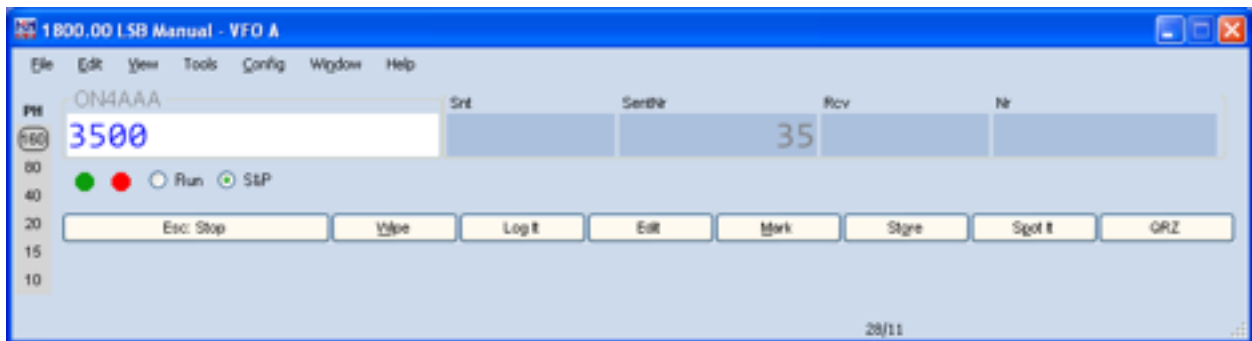


Log it button does same as the RETURN key when entering a qso

Wipe button clears the current qso – use if call sign entered and no qso takes place, does not use up the serial number

To change band click on the band list, can also enter band lower edge in call sign field and press RETURN, must enter in kHz though, eg 3500 for 80m

Note: the band choice automatically selects USB/LSB



MISTAKES

IF a mistake has been logged, the log entry can be edited, eg if missed /P etc

Click on the log entry and double click the field with an error

MM-DD HH:MM	Call	Freq	Mode	Snt	Sent	Rcv	NR	Pfx	ML	Pts	Op
09-03 12:42	G1M2D	3500.00	LSB	59	30	59	31	G		2	G4CRF
09-03 12:45	G1M2D	1800.00	LSB	59	31	59	44	G		2	G4CRF
09-03 12:45	G1M2D	1800.00	LSB	59	32	59	45	G		0	G4CRF
09-03 12:47	G4CRF	1800.00	LSB	59	33	51	99	G		0	G4CRF
09-03 12:47	G4CRF	1800.00	LSB	59	34	55	99	G		0	G4CRF
09-03 12:45	G1M2D	1800.00	LSB	59	31	59	44	G		2	G4CRF
09-03 12:45	G1M2D	1800.00	LSB	59	32	59	45	G		0	G4CRF
09-03 12:42	G1M2D	3500.00	LSB	59	30	59	31	G		2	G4CRF
09-02 18:26	G1M2D	14000.00	USB	59	22	59	4	G		2	G4CRF
09-02 17:32	G1M2D	21000.00	USB	59	6	59	77	G		2	G4CRF

Make the change and press RETURN

PLEASE ensure you make the right corrections!